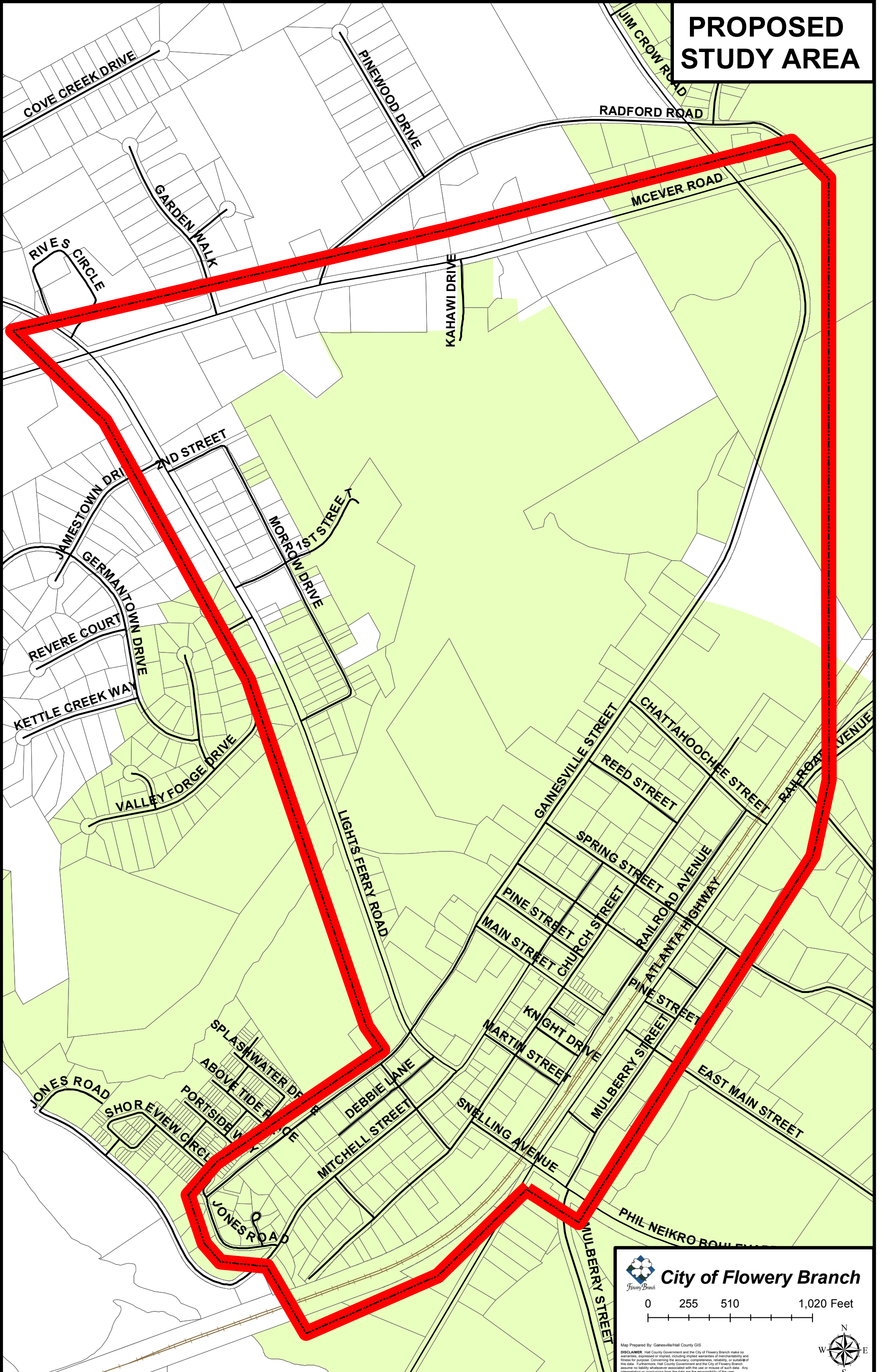



PROPOSED STUDY AREA



 **City of Flowery Branch**

0 255 510 1,020 Feet

Map Prepared By: Ganesville/Hall County GIS

DISCLAIMER: Hall County Government and the City of Flowery Branch make no warranties, expressed or implied, including implied warranties of merchantability and fitness for purpose. Concerning the accuracy, completeness, reliability, or suitability of the data. Furthermore, Hall County Government and the City of Flowery Branch assume no liability whatsoever associated with the use or misuse of such data. Any interpretation or conclusions from the data are the responsibility of the user.

